

# AMITEK

A GOVT RECOGNIZED MANUFACTURER & EXPORTER OF SPECIALTY COATINGS

# INDEX

---

ABOUT AMITEK	01
SEAMLESS TERRAZZO	02 -03
HALETOP & CONCRETE WASH	04-05
SUPER NOVA	06-07
MARBEL CRETE FLOORS & WALLS	08-09
GRANUAL PASTELLONE	10-11
COMPARISON SHEET	12-20
HOW TO CLEAN LOCAL STAINS	21
APPLICATION TOOL	22
SEAMLESS TERRAZZO SHADES	23-25
HALETOP SHADES	26
SUPER NOVA SHADES	27
MARBEL CRETE FLOORS & WALLS SHADES	28-29
GRANUAL PASTELLONE SHADES	30-31

# ABOUT AMITEK

A GOVT RECOGNIZED MANUFACTURER & EXPORTER OF SPECIALTY COATINGS

AMITEK INFRA & APP PAINT CHEMICALS PVT. LTD IS A PART OF 20 YEAR OLD AMITEK SMART GROUP AND A COMPANY ESTABLISHED A DECADE BACK TO UNDERTAKE THE MANUFACTURING OF DIFFERENT TYPES OF ROAD MARKING PAINTS, EPOXY FLOORINGS, PU CONCRETE FLOORINGS, SEAMLESS EPOXY AND CONCRETE TERRAZZO FLOORINGS AND RELATED CONSTRUCTION CHEMICALS OF GLOBAL STANDARDS UNDER THE BRAND AMITEK.



MANUFACTURED BY APP PAINT CHEMICALS PVT. LTD



# SEAMLESS TERRAZZO

## ABOUT AMITEK SEAMLESS TERRAZZO

THE AMITEK EPOXY TERRAZZO RESIN IS A PREMIUM DECORATIVE SEAMLESS EPOXY TERRAZZO FLOOR SCREED SUPPLIED IN TWO PARTS, I.E., RESIN AND HARDENER AND OPTIONALLY WITH A VARIETY OF FILLERS AND AGGREGATES.

THE MATERIAL IS POURED IN PLACE AS A 6-10 MM THICK DECORATIVE, SEAMLESS AND POLISHABLE SURFACE, WHICH COMBINES THE AGELESS BEAUTY OF TERRAZZO WITH MODERN, YET ENVIRONMENT FRIENDLY MATERIALS. THE SEAMLESS EPOXY MATRIX CAN BE MADE AVAILABLE IN UNLIMITED COLORS AND DESIGN OPTIONS.

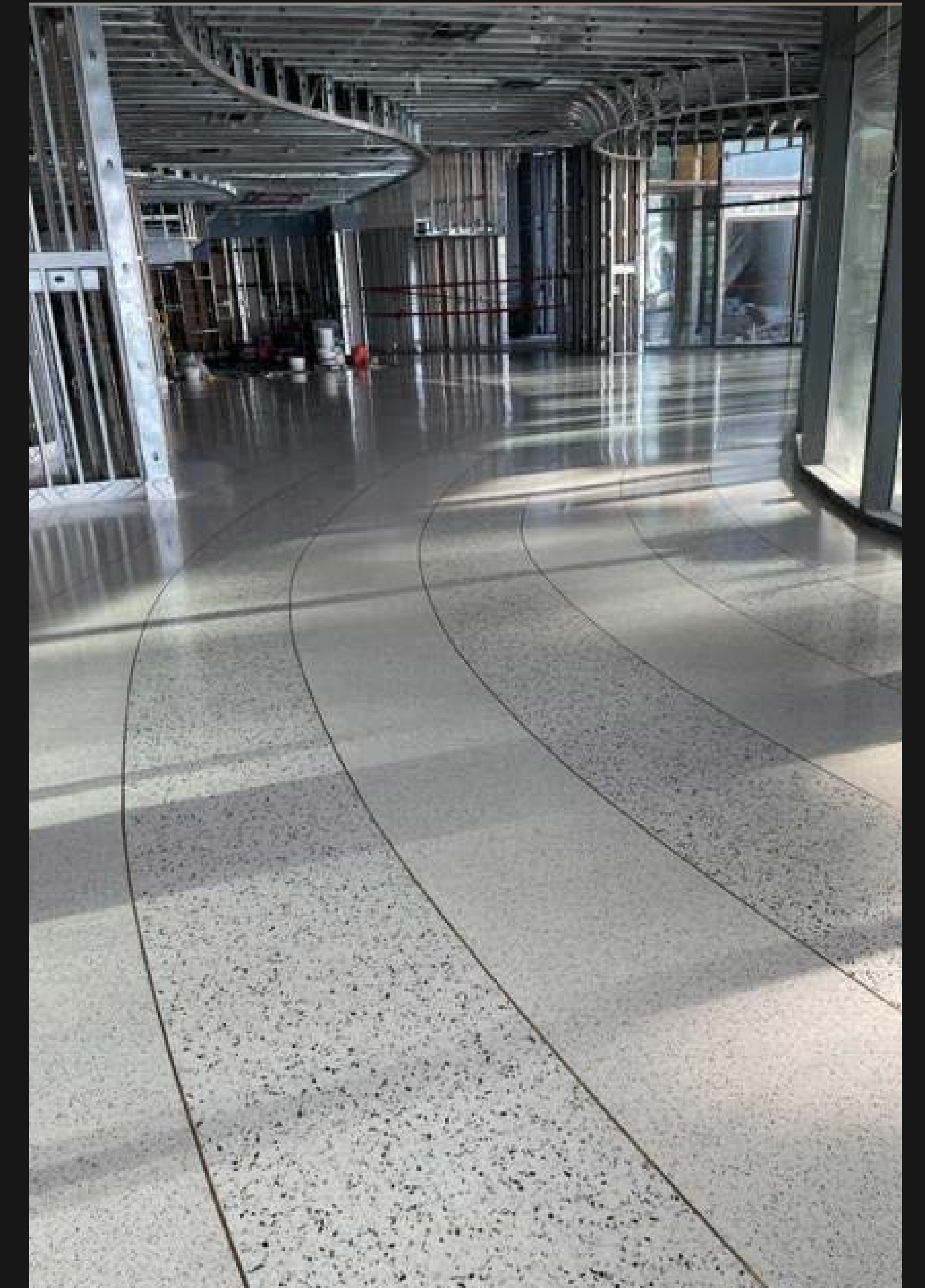
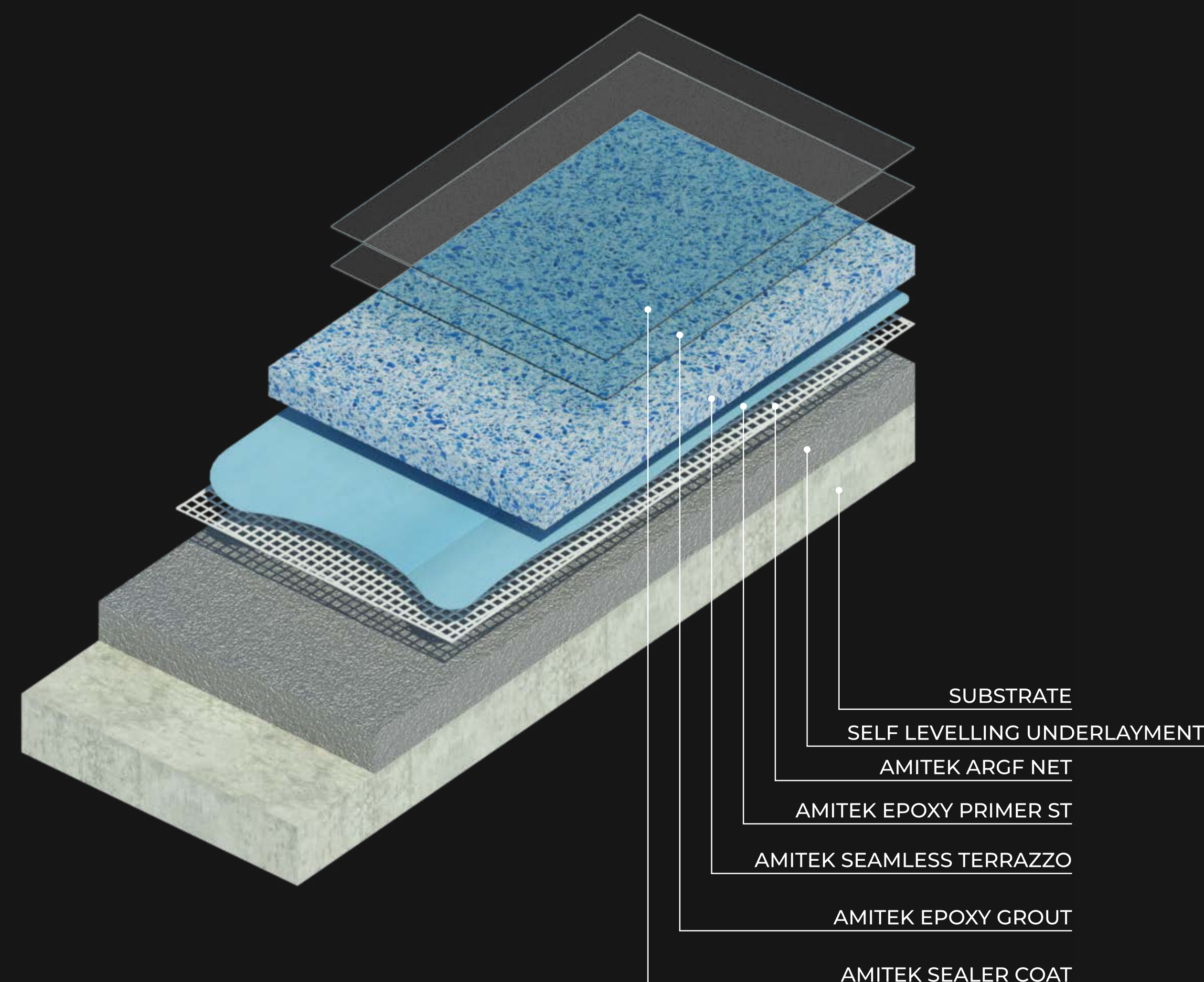
PROPER CONSTRUCTION OF BASE, USAGE OF SUITABLE PRIMERS, GROUT AND TOPCOAT ARE ADDITIONALLY REQUIRED FOR PROPER RESULTS OF THE SYSTEM.

## APPLICATION AREAS

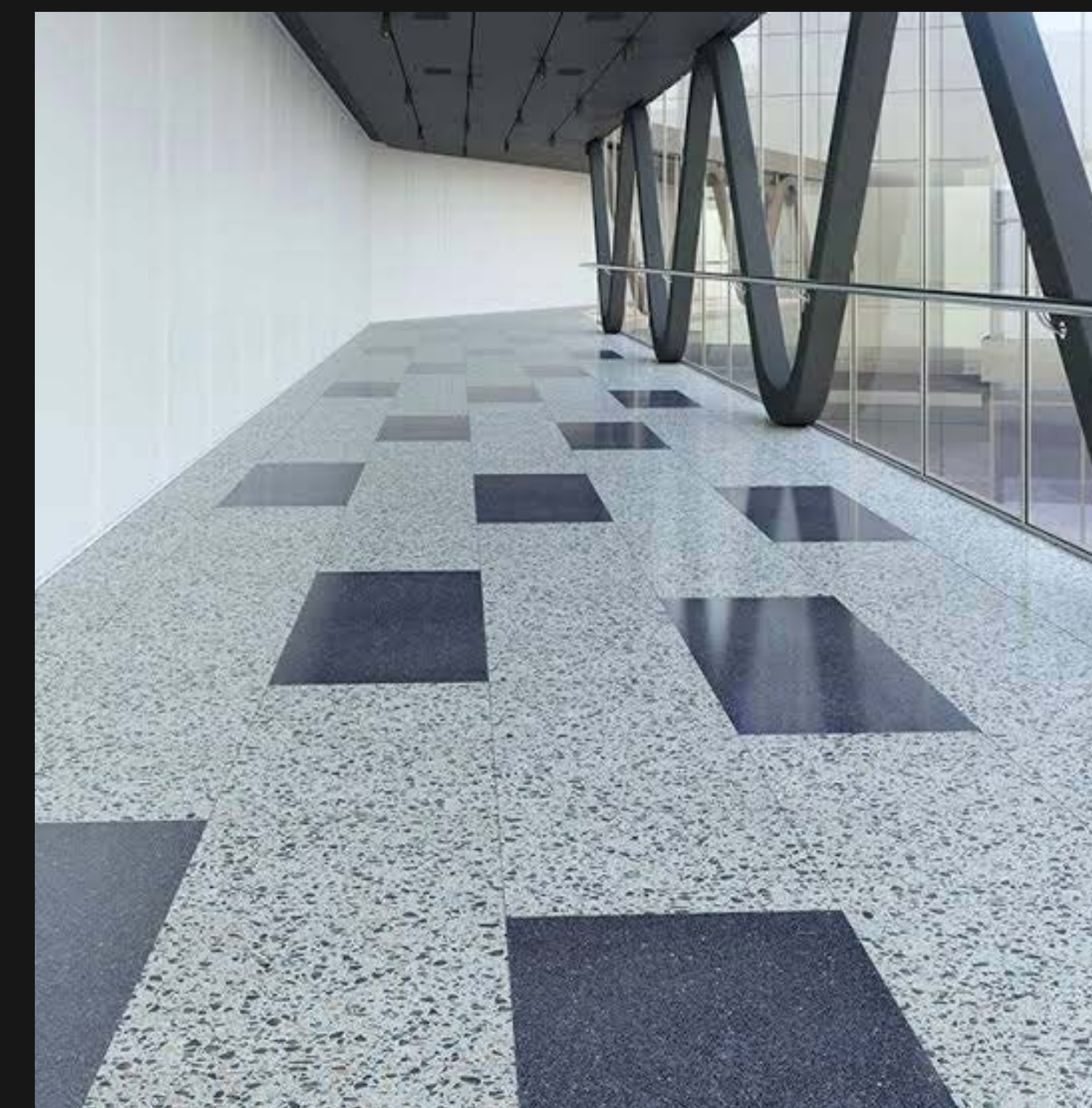
- PRIVATE HIGH-END RESIDENTIAL AND COMMERCIAL PROJECTS, GOVERNMENT AND PUBLIC BUILDINGS, SCHOOLS, RESTAURANTS AND CAFES, SHOW ROOM SAND DEPARTMENT STORES, AIRPORT TERMINALS, HOTEL RECEPTIONS, HOSPITALS ETC.

## ADVANTAGES

- SLIGHT FLEXIBILITY IN MATERIAL
- LOWER DIMENSIONAL SHRINKAGE
- THIN LAYER APPLICATION
- HIGH ADHESION TO SUBSTRATE
- EXTENSIVELY TESTED AT FACTORY
- HIGH WORKABILITY
- NO REQUIREMENT OF CURING
- WATER REPELLENCE
- HIGH CONSISTENCY OF MATERIAL









# HALETOP & CONCRETE WASH

## ABOUT AMITEK HALETOP & CONCRETE WASH

HALETOP & CONCRETE WASH IS A HIGH-PERFORMANCE, WEAR-RESISTANT CONCRETE FLOOR TOPPING DESIGNED TO ENHANCE THE DURABILITY AND AESTHETICS OF FRESHLY LAID MONOLITHIC CONCRETE FLOORS. THIS READY-TO-USE DRY SHAKE HARDENER IS A COMBINATION OF FACTORY PREMIXED HARDENING PARTICLES, ADDITIVES, CEMENT, AND COLORING PIGMENTS. THE PRODUCT IS IDEAL FOR INCREASING ABRASION RESISTANCE WHILE PROVIDING A VISUALLY APPEALING FINISH.

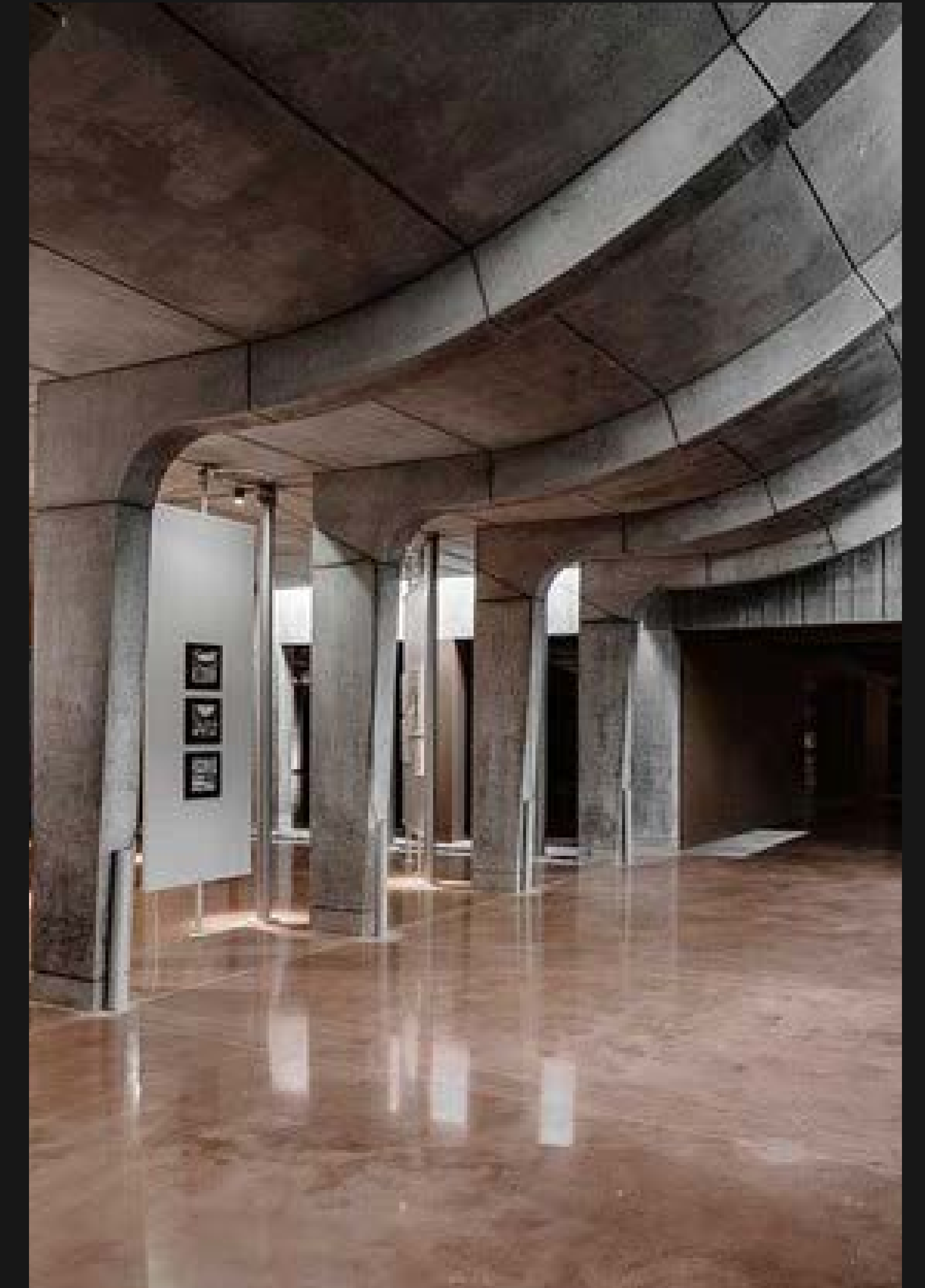
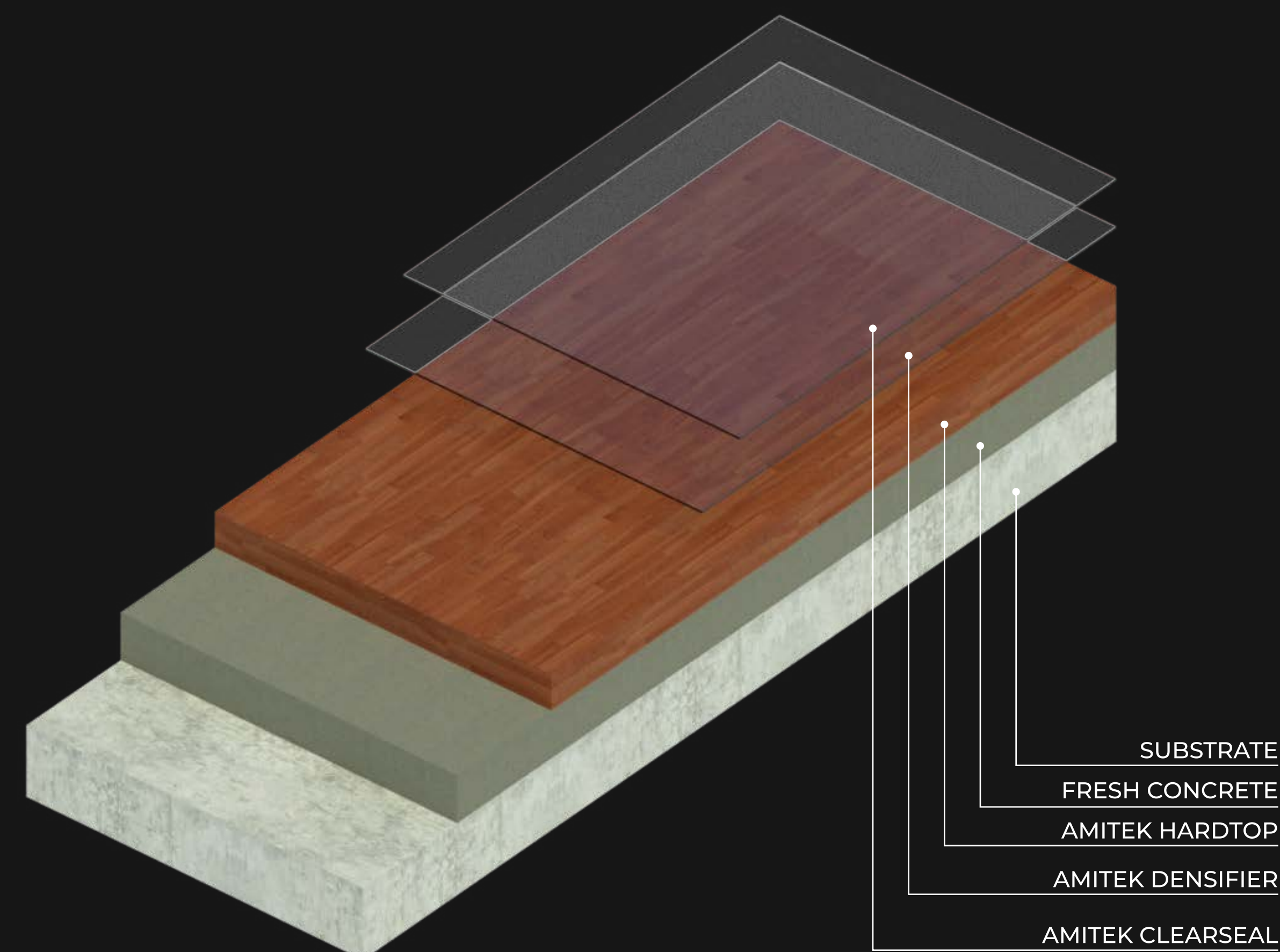
THE UNIQUE FORMULATION OF HALETOP & CONCRETE WASH ENSURES SUPERIOR WEAR RESISTANCE, HIGH STRENGTH, AND LONG-LASTING DURABILITY WITH MINIMAL MAINTENANCE COSTS. ITS HIGH BONDING CAPABILITIES AND LOWER DIMENSIONAL SHRINKAGE RESULT IN FEWER CRACKS, WHILE ITS WATER-REPELLENT PROPERTIES PROTECT AGAINST MOISTURE INGRESS AND STAINING. EXTENSIVELY TESTED AT THE FACTORY, HALETOP & CONCRETE WASH GUARANTEES CONSISTENT QUALITY AND PERFORMANCE.

## APPLICATION AREAS

- HIGH TRAFFIC INTERIOR FLOORS
- MALLS AND MULTIPLEXES
- LIGHT VEHICULAR TRAFFIC AREAS SUCH AS CAR PARKS AND BASEMENTS
- GOLF CART ROADS
- FACTORY SHED TOPPINGS

## ADVANTAGES

- WEAR RESISTANCE
- HIGH STRENGTH
- HIGH BONDING
- WATER REPELLENCE
- HIGH ADHESION TO SUBSTRATE
- LOW REQUIREMENT OF CURING









# SUPER NOVA

## ABOUT AMITEK SUPER NOVA

SUPER NOVA IS A HIGH-PERFORMANCE, CAST-ON-SITE RESIN-BOUND AGGREGATE FLOORING SYSTEM DESIGNED TO PROVIDE STUNNING AESTHETICS AND EXCELLENT WATER-DRAINING CHARACTERISTICS. THIS FLOORING SYSTEM IS STRONG AND FLEXIBLE, ALLOWING IT TO BE CAST IN LARGE, SEAMLESS PANELS BY APPROVED APPLICATORS. WITH UNIQUE BENEFICIAL CHARACTERISTICS SUCH AS IMMEDIATE DRAINAGE, UV RESISTANCE, AND GOOD HEAT REFLECTANCE, SUPER NOVA IS IDEAL FOR A VARIETY OF APPLICATIONS, ENSURING A DRY, USABLE SURFACE EVEN AFTER HEAVY RAIN.

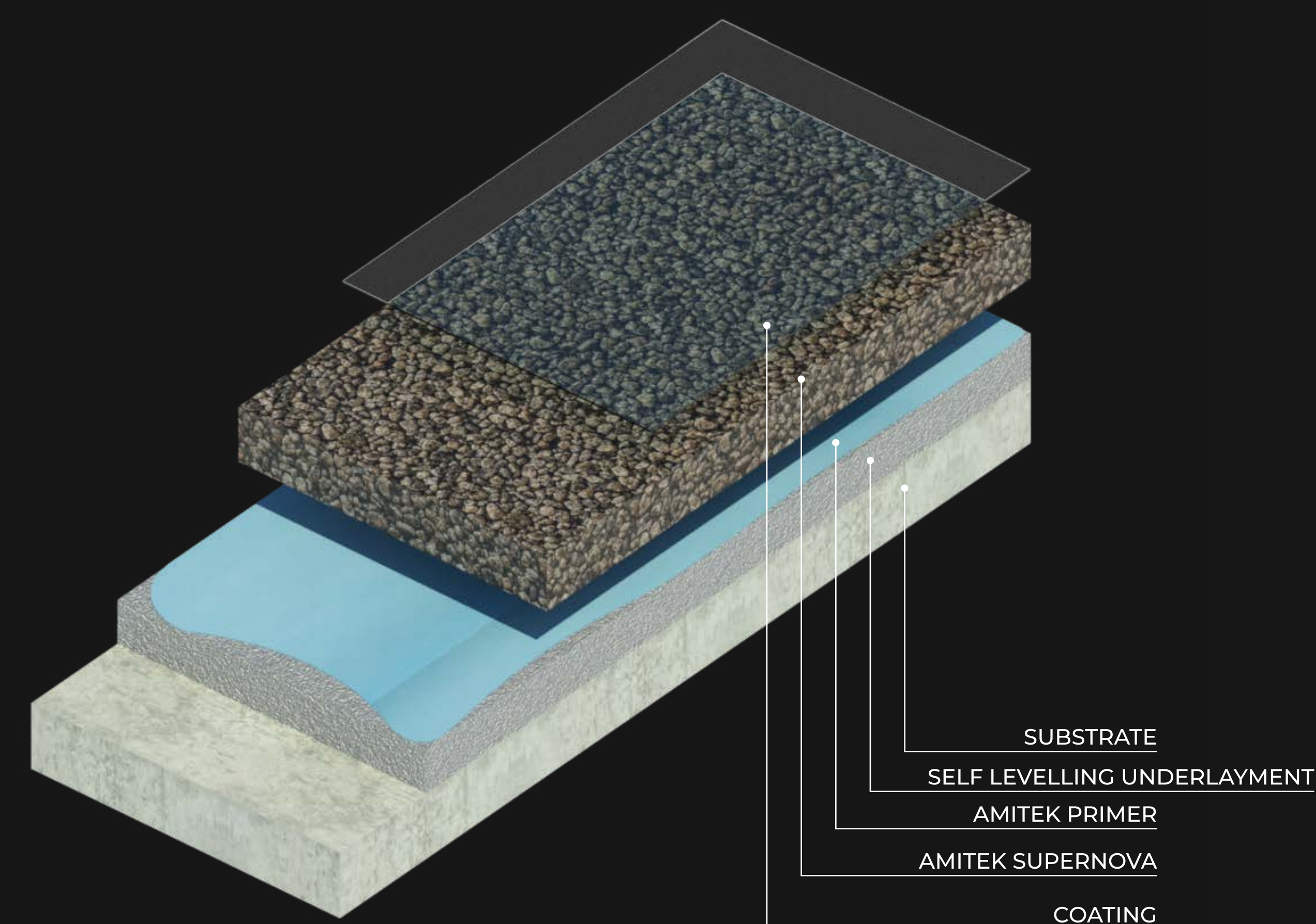
THE PRODUCT'S FAST DRAINAGE CAPABILITIES, COUPLED WITH ITS BESPOKE DESIGN OPTIONS, ALLOW FOR AESTHETICALLY PLEASING AND UNIQUE FLOOR SURFACES TAILORED TO YOUR SPECIFIC PROJECT NEEDS. SUPER NOVA IS ALSO UV RESISTANT, PREVENTING YELLOWING, AGING, OR SOFTENING UNDER PROLONGED SUN EXPOSURE. THE QUICK-LAYING FEATURE ENSURES THAT FLOORS ARE OPEN TO FOOT TRAFFIC WITHIN 24 HOURS, WITH FULL CURING OCCURRING OVER 3-4 DAYS.

## APPLICATION AREAS

- PEDESTRIAN USAGE
- LIGHT VEHICULAR TRAFFIC AREAS
- SWIMMING POOL DECKS
- GARDEN WALKWAYS
- TERRACES

## ADVANTAGES

- FAST DRAINING
- SLIGHT FLEXIBILITY IN MATERIAL
- THIN LAYER APPLICATION
- HIGH CONSISTENCY OF MATERIAL
- LOW MAINTENANCE









# MARBEL CRETE FLOORS & WALLS

## ABOUT AMITEK MARBEL CRETE FLOORS & WALLS

MARBEL CRETE FLOORS & WALLS IS A HIGH-QUALITY, CAST-ON-SITE EXTERIOR FLOORING SOLUTION FEATURING EXPOSED AGGREGATES. THIS PRODUCT IS A DESIGNER'S DELIGHT, PROVIDING LARGE PANEL SIZES AND A RANGE OF AGGREGATE EXPOSURE FINISHES. MARBEL CRETE FLOORS & WALLS FLOORS ARE IDEAL FOR EXTERIOR APPLICATIONS WHERE SEAMLESS, VISUALLY APPEALING FLOORS ARE DESIRED. THE HIGH ADHESION TO SUBSTRATES, WORKABILITY, AND CONSISTENCY OF THE MATERIAL ENSURE FAST PROJECT COMPLETION AND A DURABLE, LOW-MAINTENANCE FLOOR.

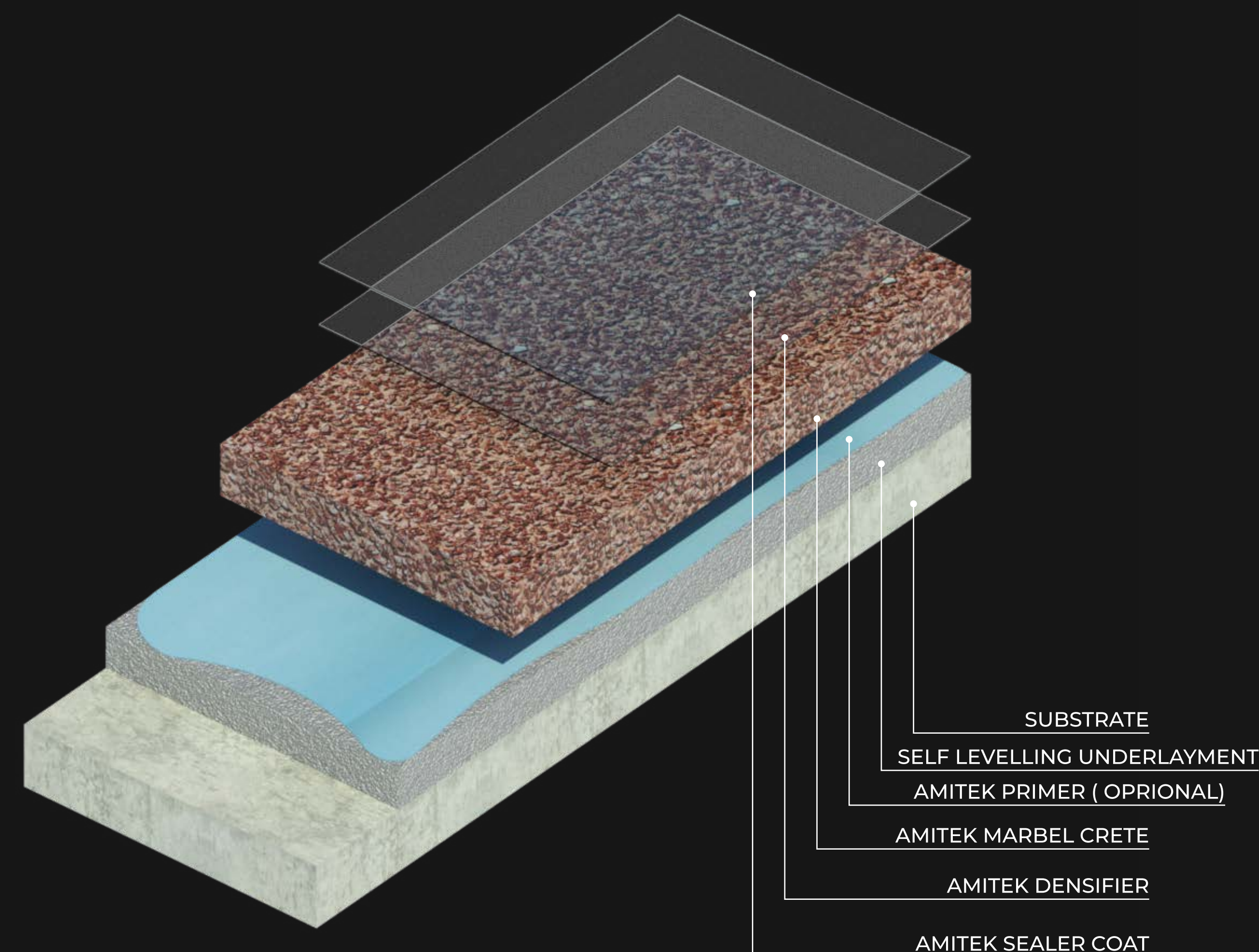
THE PRODUCT'S UNIQUE FORMULATION ALLOWS FOR HIGH STRENGTH, SLIGHT FLEXIBILITY, AND WATER REPELLENCE, MAKING IT SUITABLE FOR VARIOUS EXTERIOR ENVIRONMENTS. EXTENSIVELY TESTED AT THE FACTORY, MARBEL CRETE FLOORS & WALLS GUARANTEES QUALITY AND PERFORMANCE, DELIVERING AESTHETICALLY PLEASING AND LONG-LASTING FLOORING SOLUTIONS.

## APPLICATION AREAS

- PEDESTRIAN WALKWAYS
- CYCLE TRACKS
- LOW TRAFFIC AREAS
- SEAMLESS EXTERIOR FLOORING

## ADVANTAGES

- HIGH ADHESION TO SUBSTRATE
- HIGH WORKABILITY
- THIN LAYER APPLICATION
- HIGH CONSISTENCY OF MATERIAL
- LOWER DIMENSIONAL SHRINKAGE
- HIGH STRENGTH
- EASY TO CLEAN
- WATER REPELLENCE
- LOW REQUIREMENT OF CURING









# GRANUAL PASTELLONE

## ABOUT GRANUAL PASTELLONE

GRANUAL PASTELLONE IS A READY-TO-USE ACRYLIC EMULSION-BASED EXPOSED NATURAL AGGREGATE WALL TEXTURE. IT OFFERS A HIGHLY FLEXIBLE, SEAMLESS EXTERIOR COATING WITH A NATURAL LOOK. THE ACRYLIC EMULSION DISAPPEARS ON HARDENING, LEAVING BEHIND A CRACK-FREE, DURABLE, AND AESTHETICALLY PLEASING SURFACE.

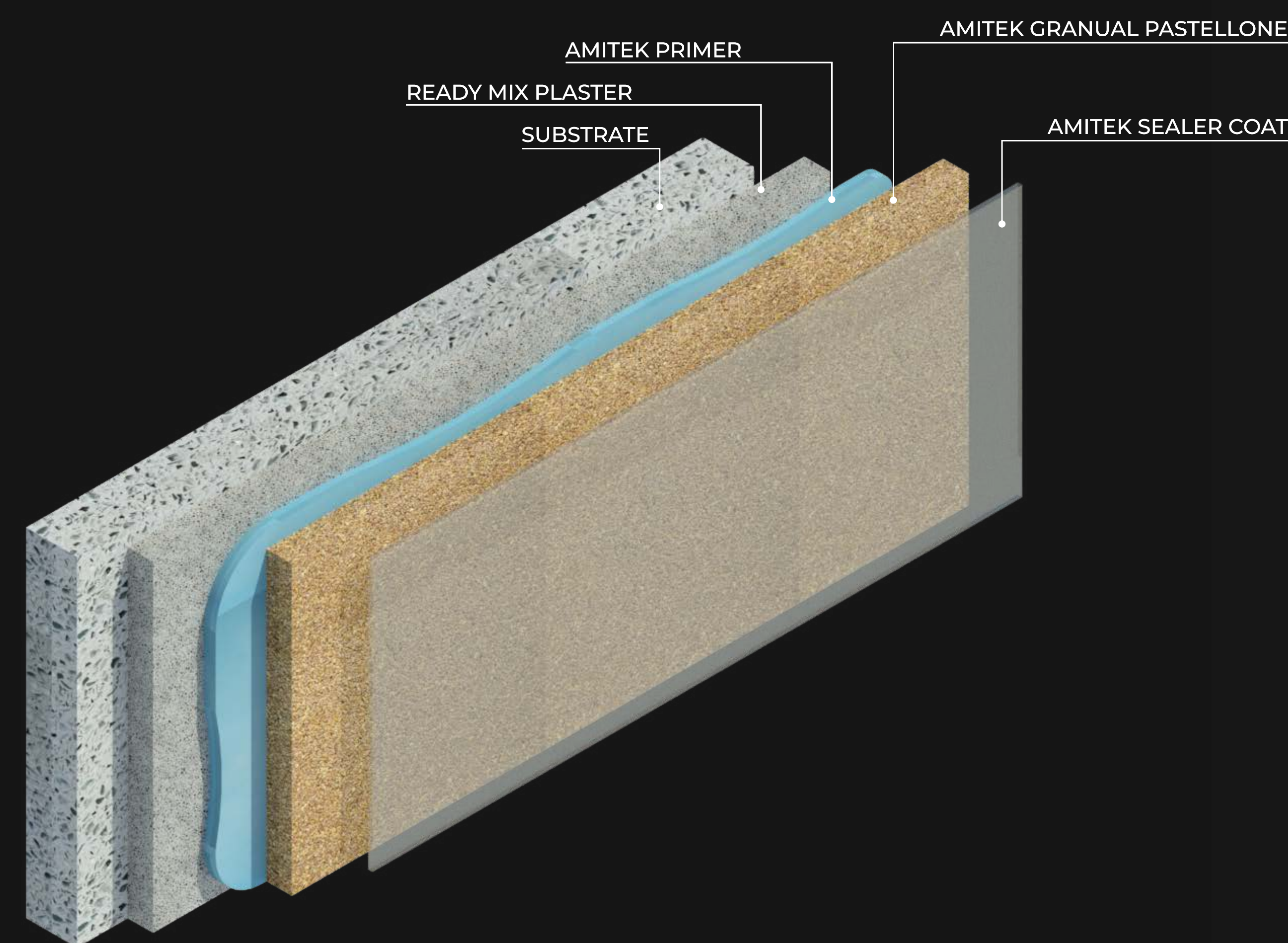
AVAILABLE IN VARIOUS COLOR OPTIONS, INCLUDING NATURAL STONE AND GLASS AGGREGATES, GRANUAL PASTELLONE ENSURES A UNIQUE AND VIBRANT FINISH WITHOUT ADDED PIGMENTS OR COLORANTS. THIS PRODUCT IS IDEAL FOR ENHANCING THE AESTHETICS AND LONGEVITY OF WALLS, MAKING IT SUITABLE FOR BOTH EXTERIOR AND INTERIOR APPLICATIONS.

## APPLICATION AREAS

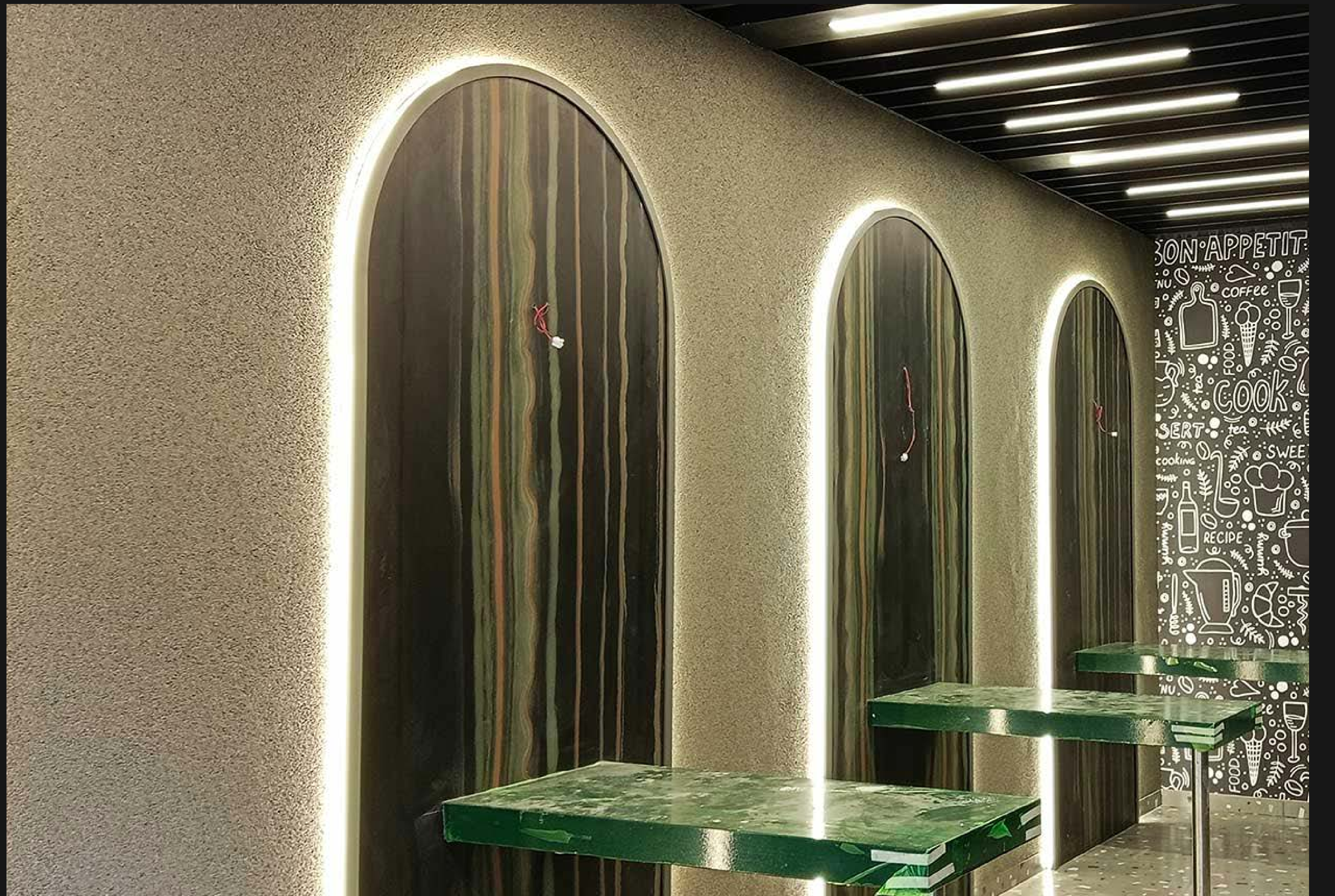
- EXTERIOR WALLS
- INTERIOR WALLS
- COLUMNS AND EDGES
- RESIDENTIAL AND COMMERCIAL BUILDINGS

## ADVANTAGES

- SEAMLESS APPLICATION
- HIGH FLEXIBILITY
- STRONG ADHESION
- NO CURING REQUIRED
- HIGH STRENGTH
- EASY TO CLEAN
- QUICK APPLICATION
- VARIETY OF COLORS
- ECO-FRIENDLY
- LOW MAINTENANCE









## COMPARISON SHEET II

S NO	TECHNICAL SPECIFICATION	TECHNICAL SPECIFICATION DEFINITION	SEAMLESS TERRAZZO	HALETOP AND CONCRETE WASH	SUPER NOVA	MARBEL CRETE FLOORS & WALLS	GRANUAL PASTELLONE
1.	Compressive Strength ASTM D 695	The Capacity Of A Material Or Structure To Withstand Loads Tending To Reduce Size.	>75N/Mm2	>40N/Mm2	>5N/Mm2	35N/Mm2	-
2.	Impact Resistance	The Ability Of A Material To Resist Permanent Deformation Caused By High Force Or Shock Applied To It Over An Extremely Short Period Of Time.	Moderate	Moderate	Moderate	Moderate	Moderate
3.	Tensile Strength ASTM D 638	How Much Load A Material Can Withstand When Loaded In Tension.	Moderate	-	-	-	-
4.	Hardness, Shore D ASTM D 2240	The Letter "D" Symbolizes The Type Of Durometer Used To Measure The Hardness Of A Material.	-	Excellent	-	-	-
5.	Chemical Resistance	The Ability Of A Substance To Endure Itself From Chemical Attack For A Specific Period Of Time.	Moderate	Moderate	Moderate	Moderate	-



S NO	TECHNICAL SPECIFICATION	TECHNICAL SPECIFICATION DEFINITION	SEAMLESS TERRAZZO	HALETOP AND CONCRETE WASH	SUPER NOVA	MARBEL CRETE FLOORS & WALLS	GRANUAL PASTELLONE
6.	Flexural Strength ASTM D 790	The Ability Of Composites Or Materials To Resist Bending Deflection When Energy Is Applied To The Structure.	>35N/Mm2	>4N/Mm2	>2N/Mm2	>5N/Mm2	-
7.	Slip Resistance (Skid Value) Pendulum Test BS 8204	One Designed And Made From Specific Materials That Enhance Its Adherence And Friction In Order To Avoid Accidents Caused By Slipping.	Moderate	Excellent	Excellent	Excellent	Moderate
8.	Scratch Resistance	The Property Of A Substance That Is Resistant To Repeated Rubbing Or Scratching.	Moderate	Moderate	Moderate	Moderate	Excellent
9.	Abrasion Resistance ASTM D 4060	An Ability To Withstand The Wear And Tear Of Friction Caused By Mechanical Parts And Instances Of Repetitive Scraping Or Rubbing.	-	-	-	-	-
10.	Slip Resistance	One Designed And Made From Specific Materials That Enhance Its Adherence And Friction In Order To Avoid Accidents Caused By Slipping	Moderate	Excellent	Excellent	Excellent	-



# COMPARISON SHEET II

S NO	TECHNICAL SPECIFICATION	TECHNICAL SPECIFICATION DEFINITION	SEAMLESS TERRAZZO	HALETOP AND CONCRETE WASH	SUPER NOVA	MARBEL CRETE FLOORS & WALLS	GRANUAL PASTELLONE
11.	Type Of Finish Glossy Or Matt		Both	Matt	Matt	Matt	Glossy
12.	Green Product		-	Yes	Yes	Yes	-
13.	VOC Content		Low	Low	Non Voc	No	Low
14.	Flexibility	The Ability To Change Or Be Changed Easily According To The Situation	Moderate	Moderate	Excellent	Excellent	Moderate
15.	Wear Resistance	A Material's Ability To Resist Material Loss By Some Mechanical Action.	Moderate	High Wear Resistance	Excellent	Moderate	-



## COMPARISON SHEET II

S NO	TECHNICAL SPECIFICATION	TECHNICAL SPECIFICATION DEFINITION	SEAMLESS TERRAZZO	HALETOP AND CONCRETE WASH	SUPER NOVA	MARBEL CRETE FLOORS & WALLS	GRANUAL PASTELLONE
16.	Moisture Resistance	A Medium's Ability To Maintain Dimensional Stability When Exposed To High Humidity And Changes In Humidity.	Low	Low	Excellent	Moderate	-
17.	Flexural Resistance	The Ability Of Composites Or Materials To Resist Bending Deflection When Energy Is Applied To The Structure.	Moderate	Moderate	Moderate	Moderate	-
18.	Toxic Report	The Capacity Of A Species Or Strain Of Microorganism To Survive Exposure To A Toxic Agent (Such As A Drug) Formerly Effective Against It	Non-Toxic	Green Product	Green Product	Green Product	Non Toxic
19.	High Temperature Application	More Than Environmental Temperature	No	-	-	-	-
20.	Fire Resistance	The Property Of Materials Or Their Assemblies That Prevents Or Retards The Passage Of Excessive Heat, Hot Gasses Or Flames Under Conditions Of Use	Moderate	Moderate	Excellent	Excellent	Moderate



S NO	TECHNICAL SPECIFICATION	TECHNICAL SPECIFICATION DEFINITION	SEAMLESS TERRAZZO	HALETOP AND CONCRETE WASH	SUPER NOVA	MARBEL CRETE FLOORS & WALLS	GRANUAL PASTELLONE
21.	Surface Preparation Needed	Before Application Of The Product Substrate Must Be Treated And Properly Levelled	Yes	Yes	Yes	Yes	Yes
22.	Surface Needed CSP	Concrete Surface Profile Index	CSP 3-5	Please Follow The Base Preparation Document	Super Nova Floors Can Be Laid On Existing Stone, Tile, Asphalt Or Concrete Flooring (Please Follow The Base Preparation Document)	Please Follow The Base Preparation Document	Please Follow The Base Preparation Document
23.	Water Absorption	The Ability Of Material To Absorb Water When Immersed In It And Is Represented With Water Absorbing Capacity	<0.2%	Low	Low	Low	Low
24.	Surface Can Be Applied	Surface Of The Floor, Ceiling, Walls And Furniture	Flooring As Well As On Walls	Only Floors	Only Floors	Only Floors	Only Walls
25.	Application In Wet Areas	Wet Areas Means Such As Washrooms, Swimming Pools And Other Water Bodies.	-	Yes	Yes	No	No



S NO	TECHNICAL SPECIFICATION	TECHNICAL SPECIFICATION DEFINITION	SEAMLESS TERRAZZO	HALETOP AND CONCRETE WASH	SUPER NOVA	MARBEL CRETE FLOORS & WALLS	GRANUAL PASTELLONE
26.	Application Areas	Where We Can Apply The Products	High End Residential And Commercial Premises	It Is Sprayed On Wet And Fresh Concrete Installations To Give A Value Added Finish. Applications Include All Interior High Traffic Floors, Malls, Multiplexes, Light Vehicular Traffic Area With High Number Of Vehicles Like Car Parks, Basements, Golf Cart Roads And Factory Shed Topping.	Super Nova Is Suitable For Pedestrian Usage And Light Vehicular Traffic, And Ideal For Use On Swimming Pool Decks, Garden Walkways, Terraces Etc.	Generally Used In Exterior Flooring For Pedestrian, Cycle Track And Low Traffic Applications, Where Seamless Floors Are Required Or Desired	Good For Most Walls, Exteriors As Well As Interiors. Can Be Easily Wrapped Around Wall Edges, Columns Etc. High Adhesion Of The Product Makes It Suitable For Many Diverse Applications
27.	Pot Life	The Amount Of Time A Given Mass Of Mixed Components Will Remain In The Liquid State At A Specific Temperature	30-60 Minutes	30 Minutes(Depends On The WC Ratio In The Concrete And Free Water On Concrete During Casting)	20-30 Minutes	20-30 Minutes	20-30 Minutes
28.	Drying Time	The Time Required For The Loss Of Volatile Components So That The Material Will No Longer Be Adversely Affected By Weather Conditions Such As Dew, Rain Or Freezing.	72 Hours	72 Hours	72 Hours	48 Hours	24 Hours
29.	Color Option Available	Ral Shades And Color Options	Many Color Options Refer Catalog	For Color Options Refer Catalog	Many Color Options Are There Refer Catalog	Many Color Options Refer Catalog	Many Colours Options Are There Refer Catalog
30.	Primer Required		Yes	No	Yes (If Concrete Surface)	Yes	Yes



# COMPARISON SHEET II

S NO	TECHNICAL SPECIFICATION	TECHNICAL SPECIFICATION DEFINITION	SEAMLESS TERRAZZO	HALETOP AND CONCRETE WASH	SUPER NOVA	MARBEL CRETE FLOORS & WALLS	GRANUAL PASTELLONE
31.	Screed Required		Yes	Yes	No	Yes	Yes
32.	Top Coat Required		Yes	Yes	Yes	Yes	No
33.	Screed Thickness		6-10mm	2-5 Mm Depending Upon Application	-	-	Yes
34.	Thickness Of Finish Product		6-10mm	2-5mm	15 Mm For 6-8 Mm Aggregates	12-20mm	2 To 2.5 Mm
35.	Primer Components		2 (Curing Agent+Binder)	-	2 (Curing Agent+Binder)	-	Single Component



# COMPARISON SHEET II

S NO	TECHNICAL SPECIFICATION	TECHNICAL SPECIFICATION DEFINITION	SEAMLESS TERRAZZO	HALETOP AND CONCRETE WASH	SUPER NOVA	MARBEL CRETE FLOORS & WALLS	GRANUAL PASTELLONE
36.	Screed Components		4(Curing Agent+Binder+ Fillers+Aggregate)	-	-	-	-
37.	Top Coat Component		4(Curing Agent+Binder+Fillers+ Pigment)	4(Curing Agent+Binder+Fillers+ Pigment)	3(Curing Agent+Pigmented Binder +Aggregates)	2(Part A Powder + Part B Aggregate)	-
38.	Dust Resistance		Moderate	Moderate	Moderate	Moderate	Moderate
39.	Product Application Area		Indoor Product	For Indoor And Outdoor	For Outdoor And Wet Area	For Outdoors	For Outdoors
40.	Water Draining Capacity		No	No	Yes(Flow Range Between 30-70 Liter Per Second Per Square Meter)	No	No



## COMPARISON SHEET II

S NO	TECHNICAL SPECIFICATION	TECHNICAL SPECIFICATION DEFINITION	SEAMLESS TERRAZZO	HALETOP AND CONCRETE WASH	SUPER NOVA	MARBEL CRETE FLOORS & WALLS	GRANUAL PASTELLONE
41.	Seamless Surfaces		No	Large Seamless Panels	Large Seamless Panels	Large Seamless Panels	Yes
42.	UV Resistant		No	-	Yes	Yes	Moderate
43.	Good Heat Reflectance		No	-	Yes	-	-
44.	Sealer Coat Required		Yes	No	Yes	Yes	-



# HOW TO CLEAN LOCAL STAINS

## SEAMLESS TERRAZZO

THE BEST WAY TO CLEAN UP A DIRTY SEAMLESS TERRAZZO FLOOR IS AS FOLLOWS:

- SWEEP AND VACUUM THE ENTIRE AREA CAREFULLY.
- REMOVE ALL ITEMS IN THE WAY TO GET TO THE FLOOR.
- ONCE YOU HAVE REMOVED ALL THE SURFACE DIRT, GRIME, AND GRIT, USE A HARD FOAM MOP AND WARM/HOT WATER TO GET RID OF ALL THE BUILT-UP DIRT.

## HALETOP AND CONCRETE WASH

THE BEST WAY TO CLEAN UP A DIRTY HALETOP AND CONCRETE WASH FLOOR IS AS FOLLOWS:

- SWEEP AND VACUUM THE ENTIRE AREA CAREFULLY.
- REMOVE ALL ITEMS IN THE WAY TO GET TO THE FLOOR.
- ONCE YOU HAVE REMOVED ALL THE SURFACE DIRT, GRIME, AND GRIT, USE A HARD FOAM MOP AND WARM/HOT WATER TO GET RID OF ALL THE BUILT-UP DIRT.





# APPLICATION TOOLS

## FOR SEAMLESS TERRAZZO, HALETOP AND CONCRETE WASH



VARIABLE SPEED DRILL WITH 1/2" OR 3/8" CHUCK.



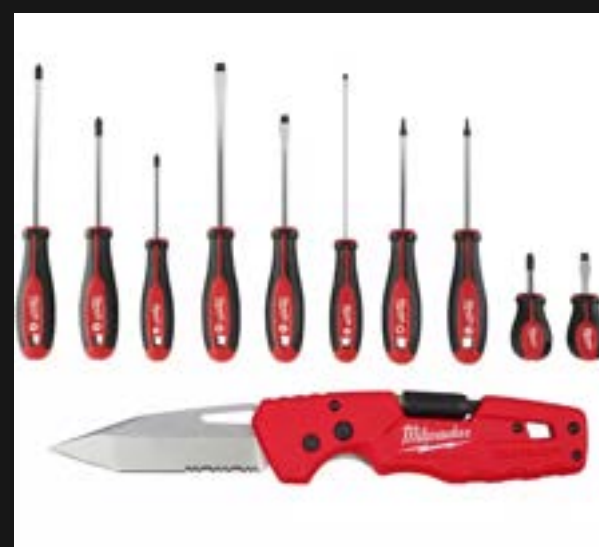
MIXING BLADES.



TIMER FOR MEASURING MIX TIMES.



5 GALLON PAILS.



SCREWDRIVER/ UTILITY KNIVES FOR OPENING PLASTIC BUCKETS AND SCREED BAGS.



PLASTIC MEASURING CONTAINERS  
(1 QUART, 2 1/2 QUART, 5 QUART)



HEAVY DUTY PLASTIC TARP OR CARDBOARD FOR MIXING STATION.



TROWELS.

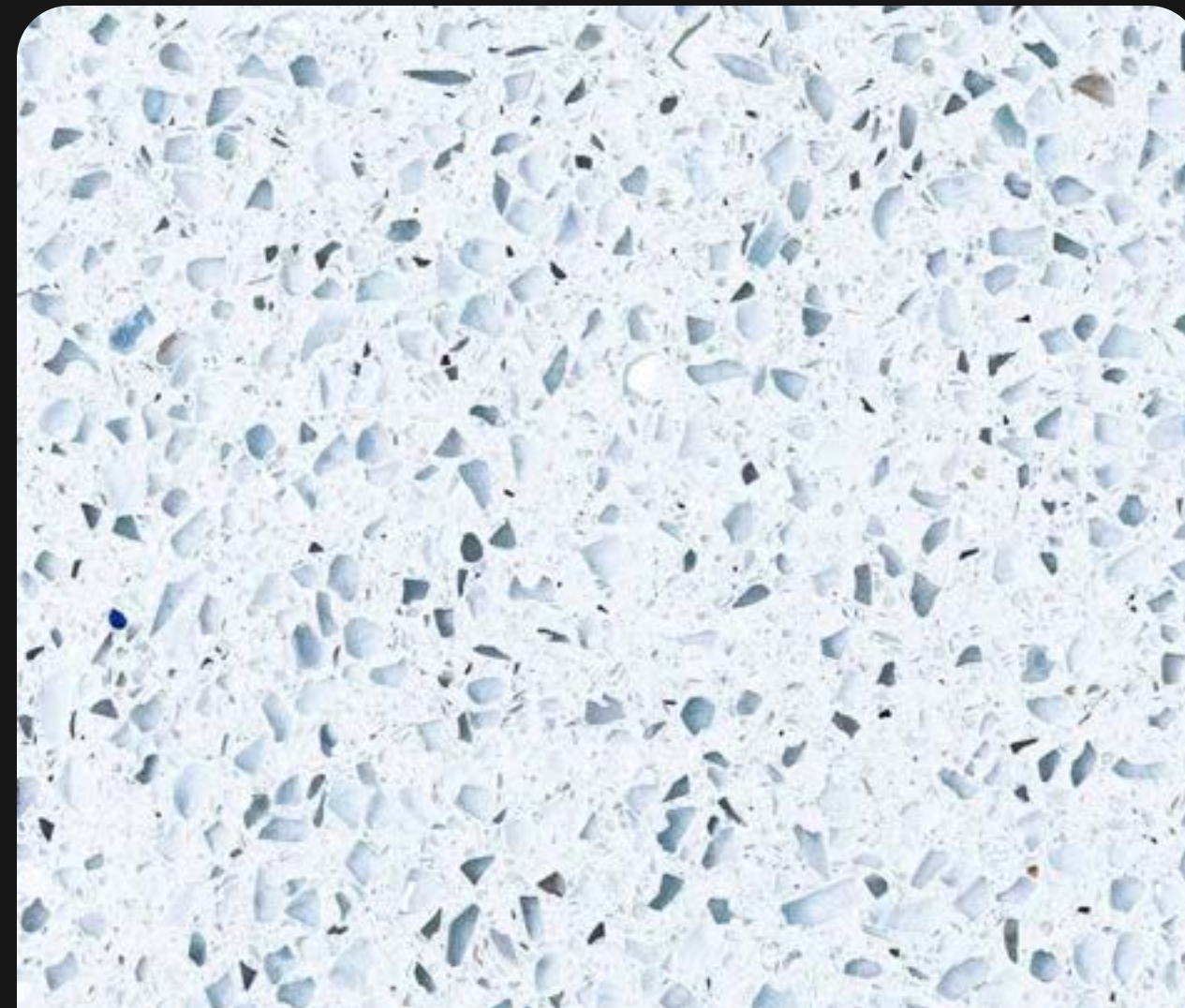


SPIKED ROLLER



COVING TOOL.





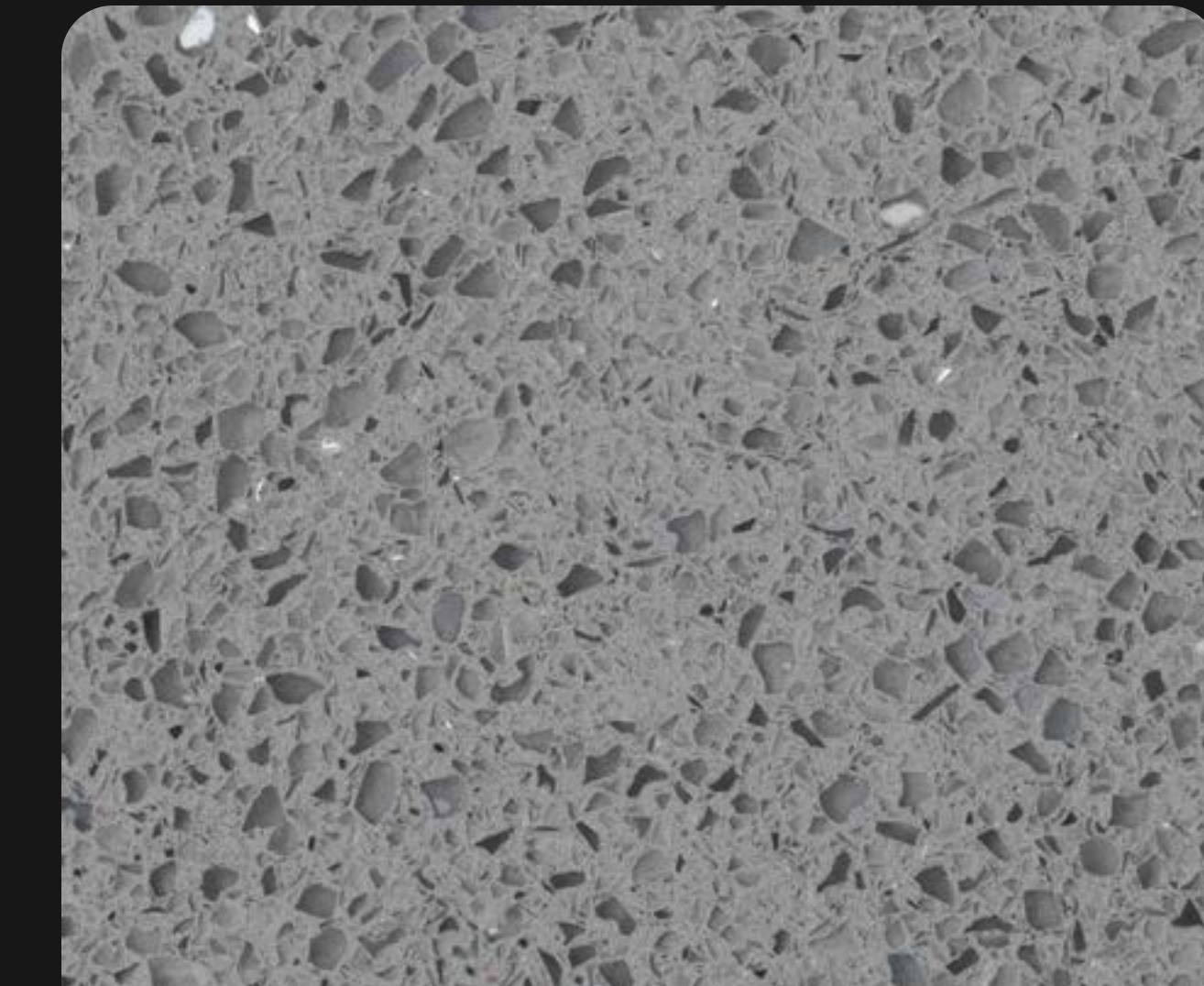
WHITE MICRO MIRROR



OYSTER WHITE MICRO MIRROR



LIGHT IVORY RAL 1015 MICRO MIRROR



LIGHT SILVER MICRO MIRROR



COFFEE CREAM MICRO MIRROR



PINK MICRO MIRROR



GINGER MICRO MIRROR



MOCHA MICRO MIRROR



LIGHT GREEN MICRO MIRROR



DARK MOCHA MICRO MIRROR



PALE BROWN RAL 8025 MICRO MIRROR



DARK SILVER MICRO MIRROR



# SEAMLESS TERRAZZO SHADES AMITEK OFFERS



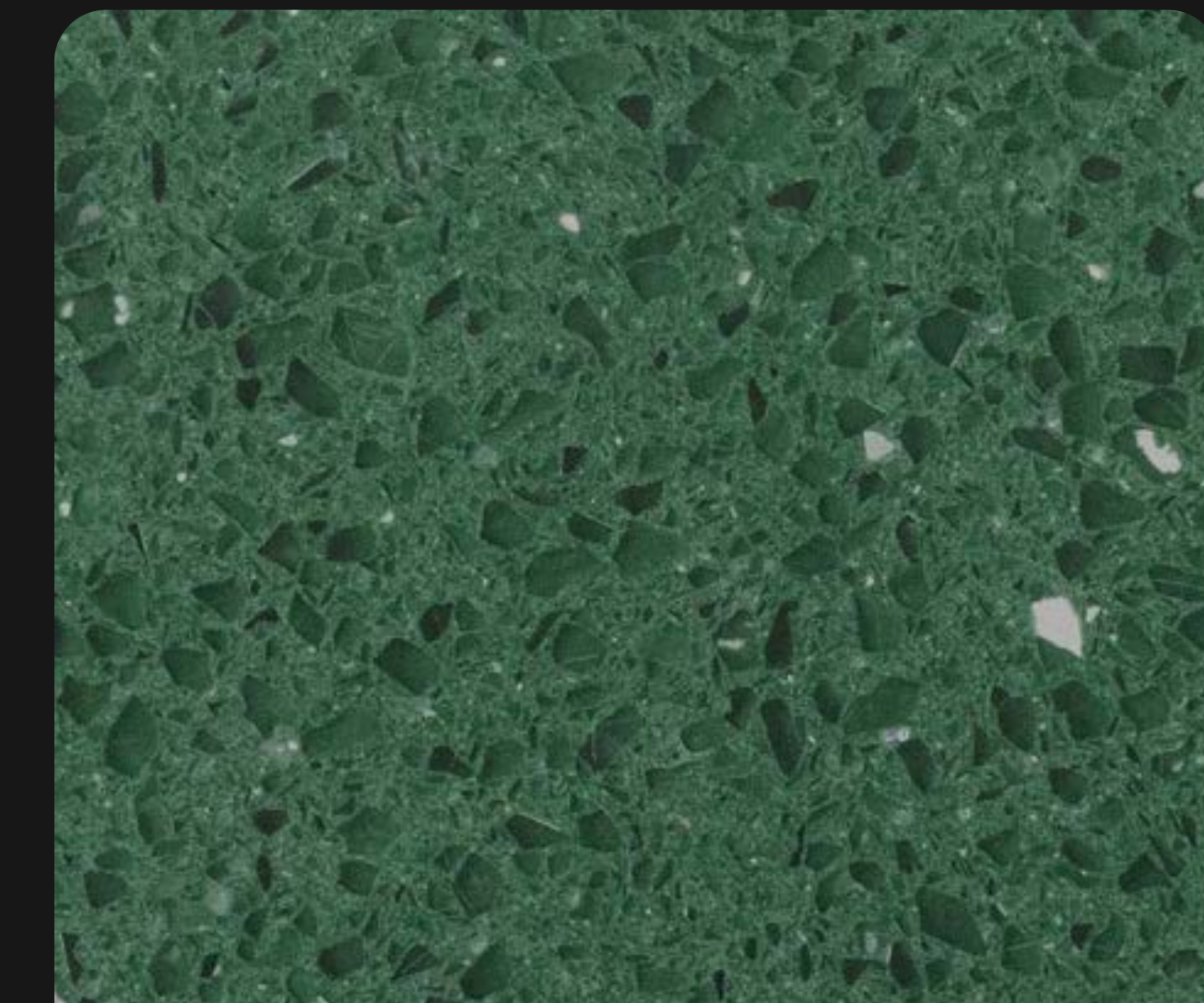
JAISALMER ORANGE  
MICRO MIRROR



DARK YELLOW MICRO  
MIRROR



KOTA GREEN MICRO  
MIRROR



CHROME GREEN MICRO  
MIRROR



NEON YELLOW MICRO  
MIRROR



LIGHT BLUE MICRO  
MIRROR



ORANGE MICRO MIRROR



RED MICRO MIRROR



WINE MICRO MIRROR



ROYAL BLUE MICRO  
MIRROR



BROWN MICRO MIRROR



JETBLACK MICRO  
MIRROR



# SEAMLESS TERRAZZO SHADES AMITEK OFFERS



LIGHT SILVER MICRO  
MARBLE



LIGHT GREEN MICRO  
OLIVE



COFFEE CREAM MICRO  
BUFF



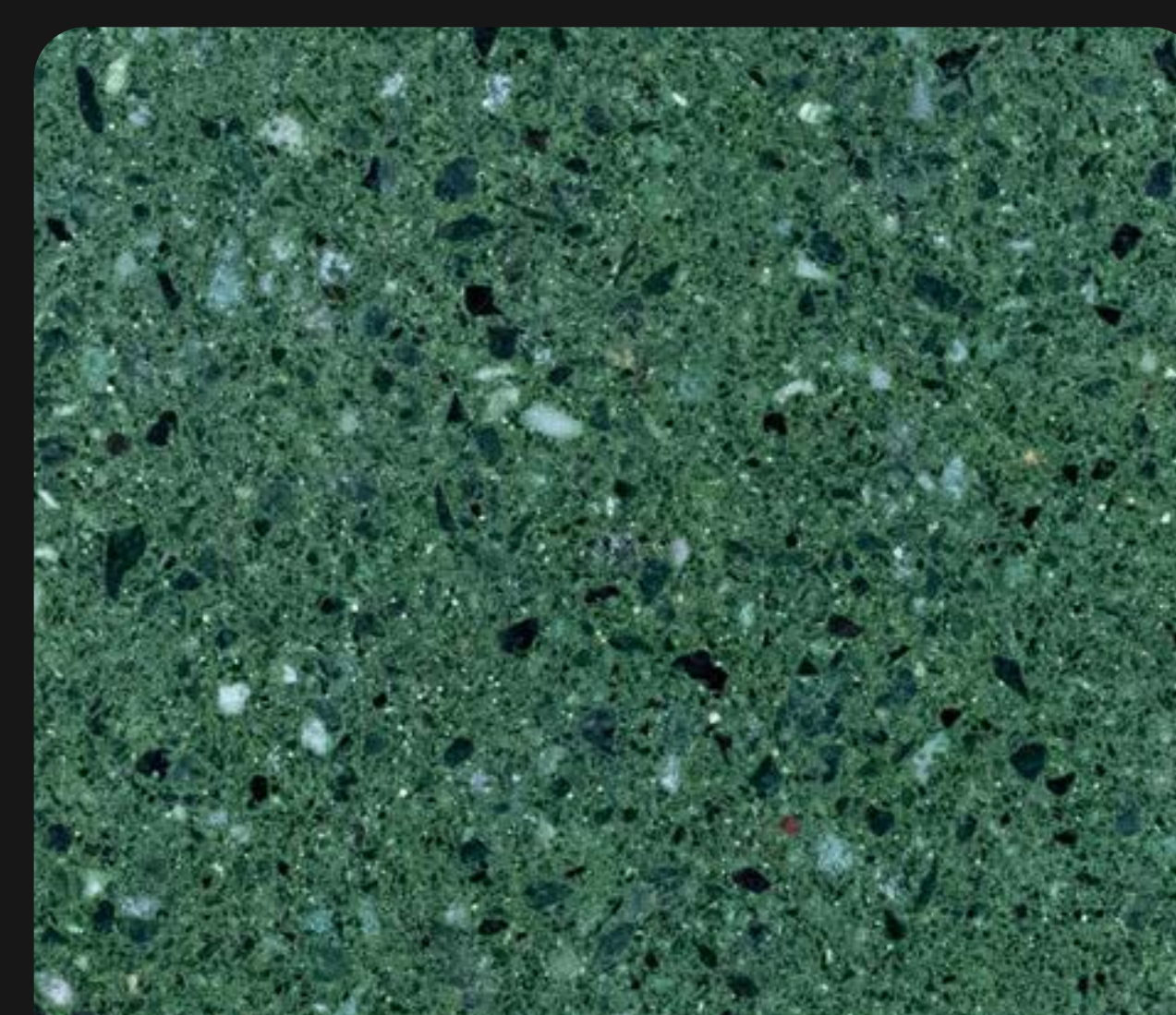
JAISALMER MICRO  
CAMEL



DARK YELLOW MICRO  
RAJ YELLOW



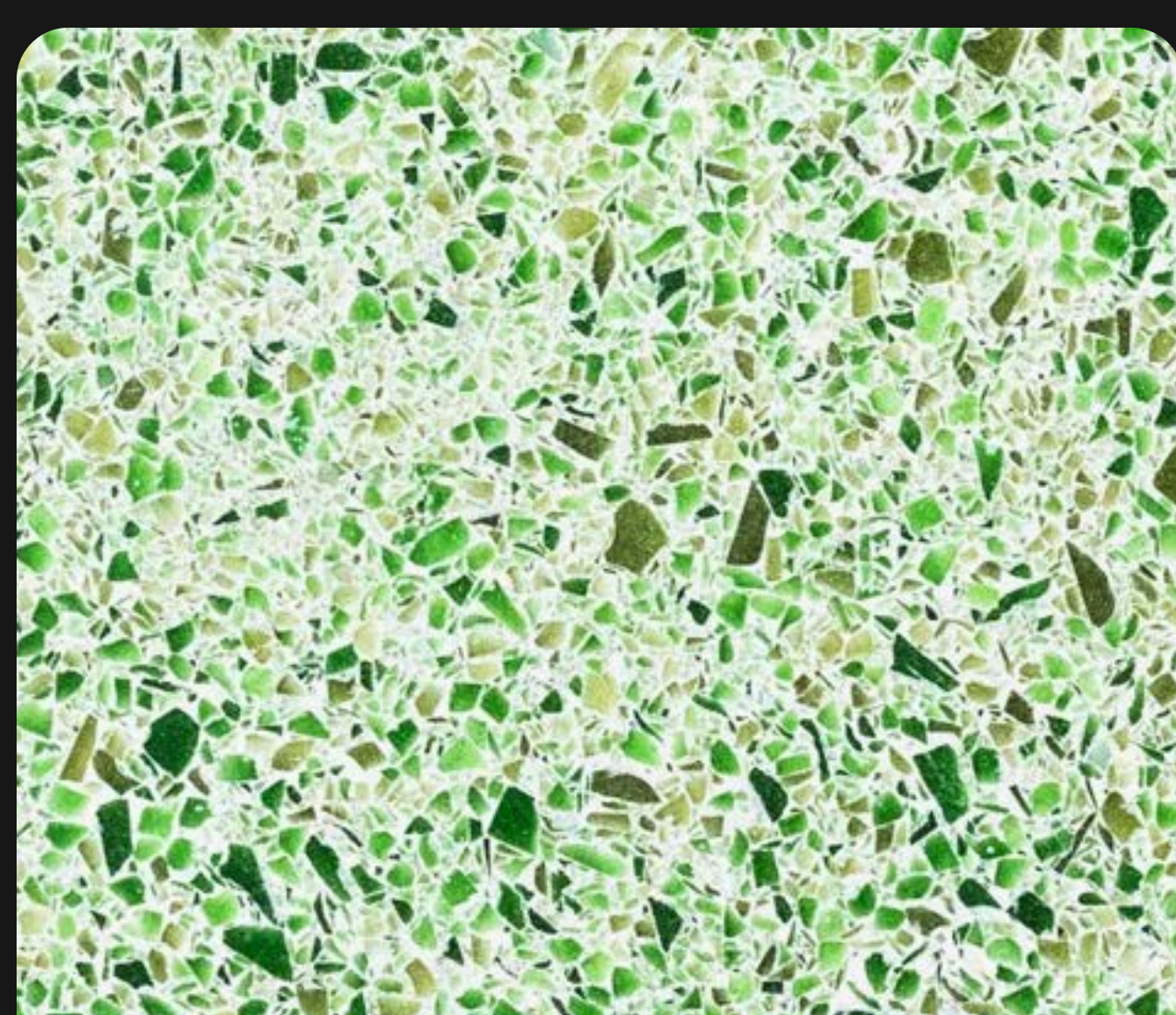
BROWN MICRO BEIGE



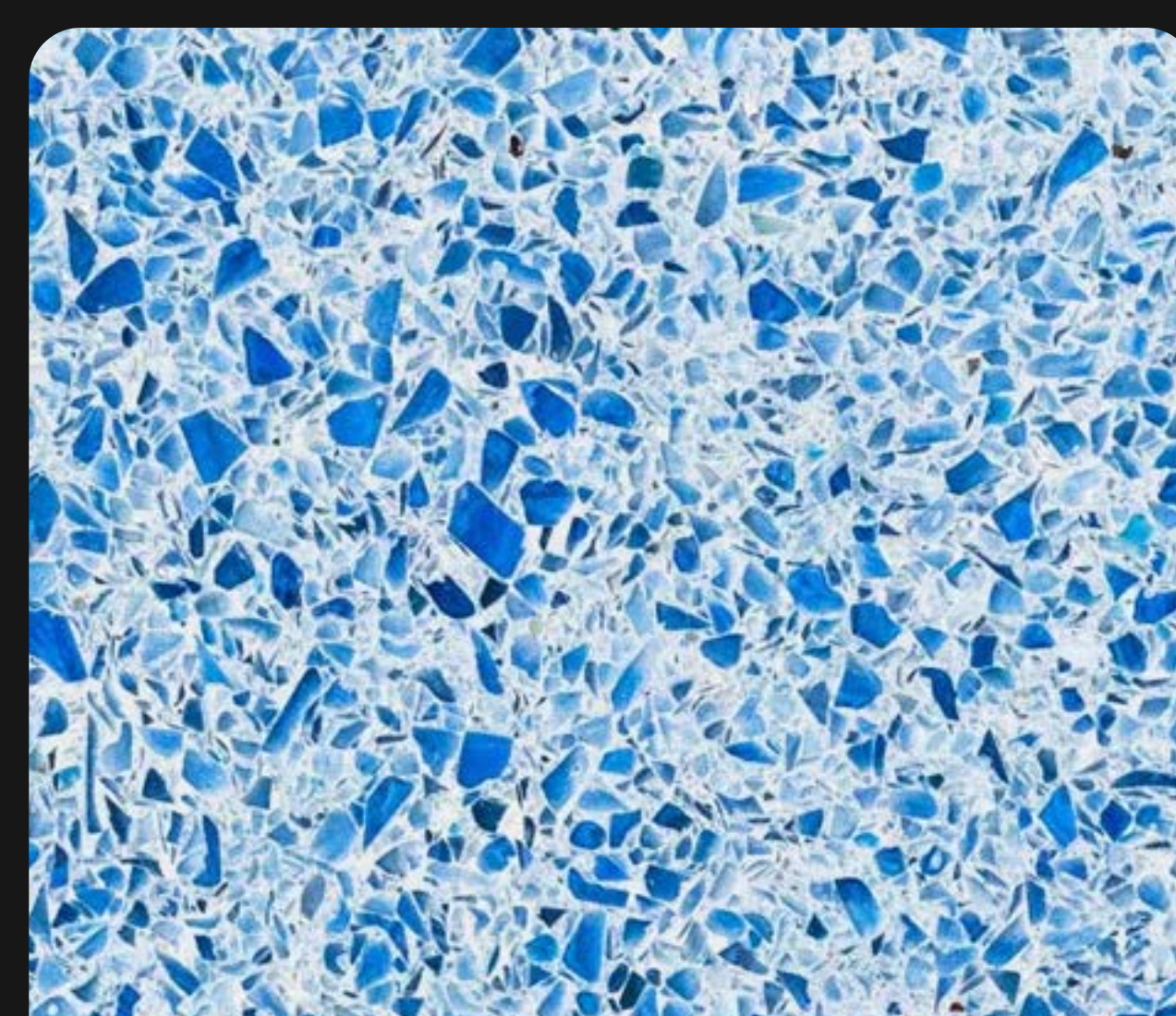
DARK GREEN MICRO  
GREEN MARBLE



WHITE MICRO MIX  
GLASS



WHITE MICRO MIX  
GLASS



WHITE MICRO BLUE  
GLASS



ROYAL BLUE MICRO  
BLUE GLASS



JETBLACK MICRO DUSK





WHITE



OFF WHITE



LATTE



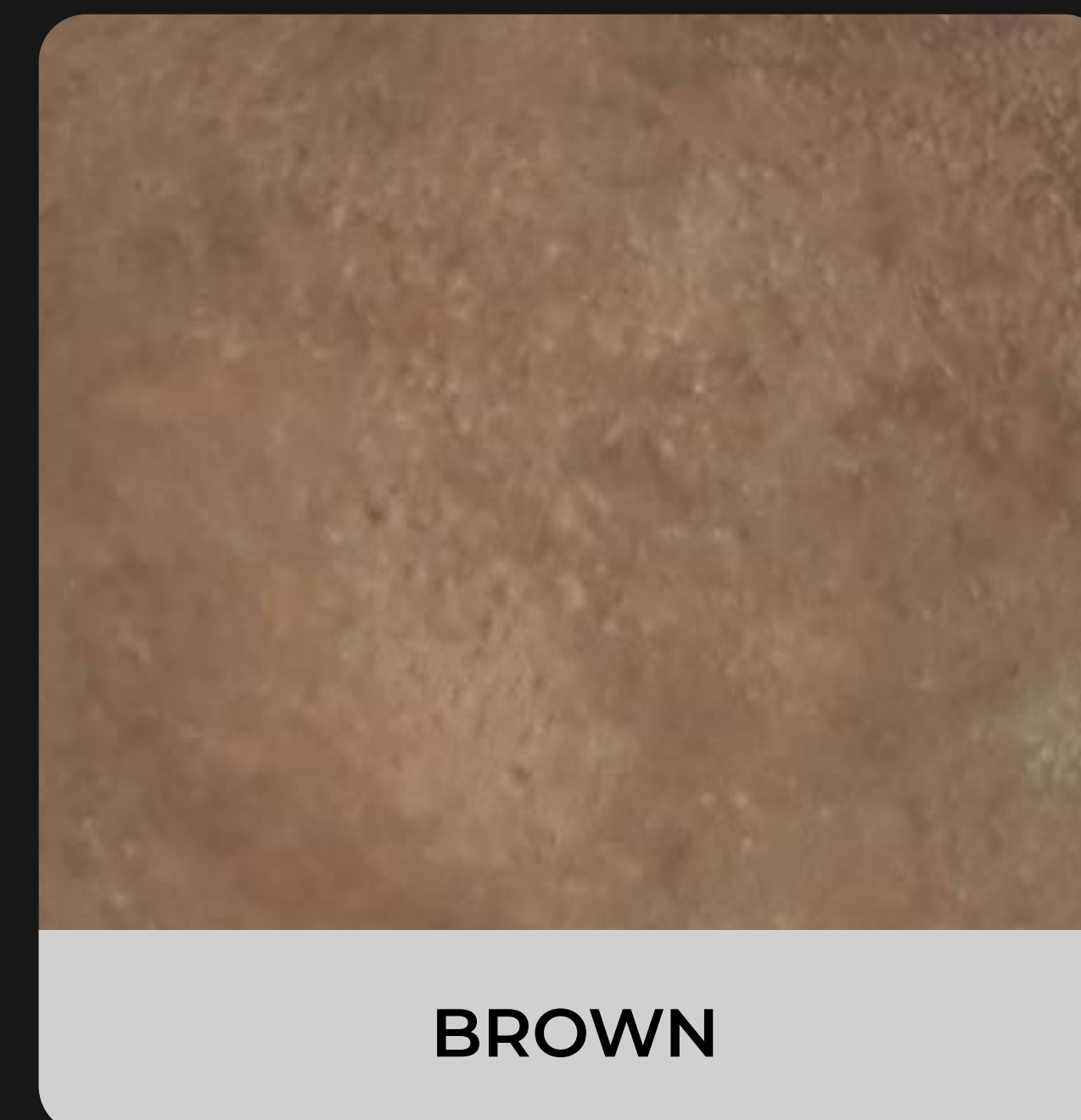
GREY



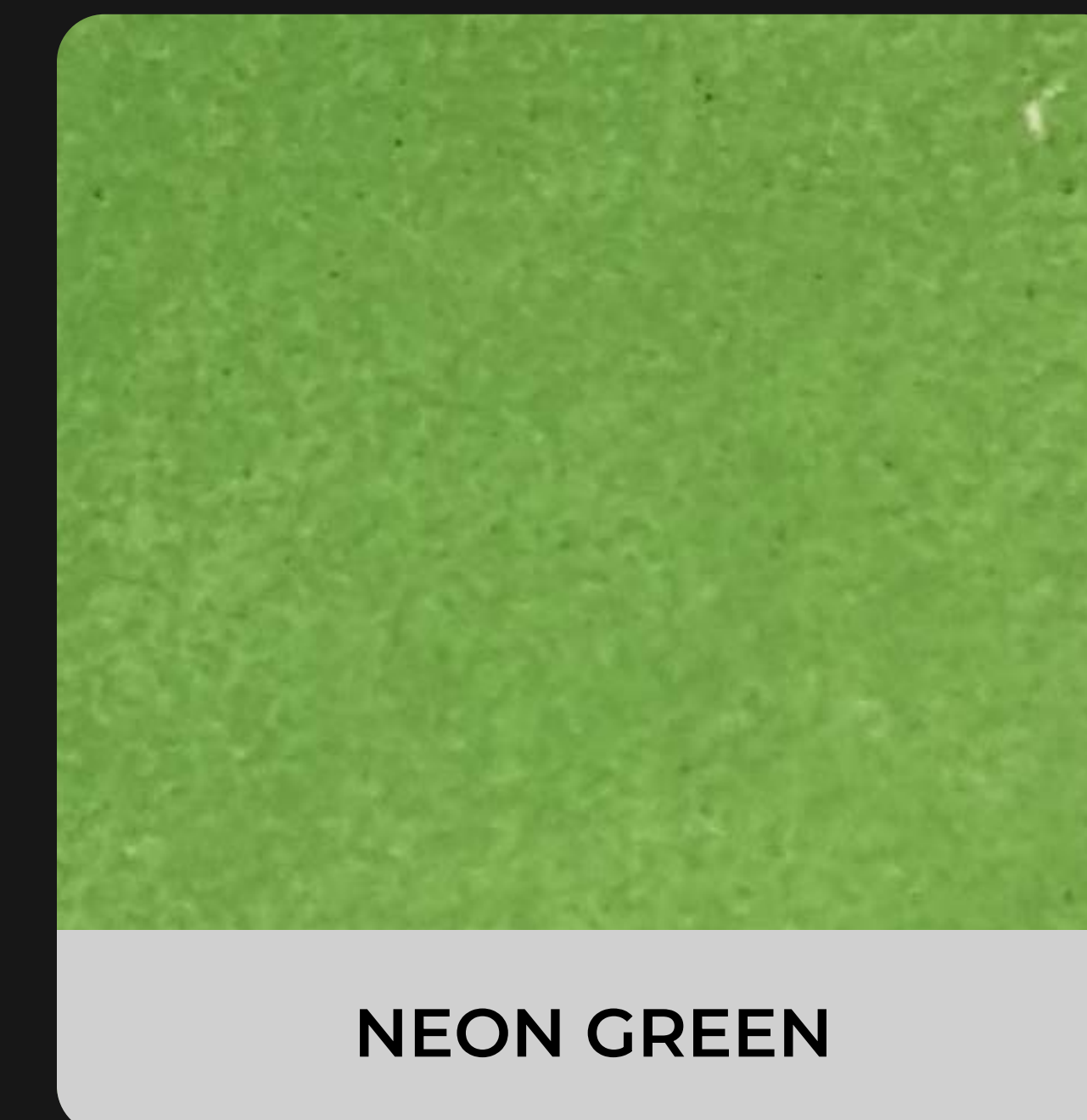
ASH GREY



JAISALMER YELLOW



BROWN



NEON GREEN



DARK GREEN



ROYAL BLUE



RED



JETBLACK



# SUPER NOVA SHADES AMITEK OFFERS



AMITEK SUPERNOVA SN 1



AMITEK SUPERNOVA SN 2



AMITEK SUPERNOVA SN 3



AMITEK SUPERNOVA SN 4



AMITEK SUPERNOVA SN 5



AMITEK SUPERNOVA SN 6



AMITEK SUPERNOVA SN 7



AMITEK SUPERNOVA SN 8



AMITEK SUPERNOVA SN 9



AMITEK SUPERNOVA SN 10



AMITEK SUPERNOVA SN 11



AMITEK SUPERNOVA SN 12



# MARBEL CRETE FLOORS & WALLS SHADES AMITEK OFFERS



WHITE MICRO MARBLE



PERLATO MICRO BEIGE



GREY MICRO OLIVE



JAISALMER MICRO CAMEL



RED MICRO SCARLET



JETBLACK MICRO DUSK



GREY MICRO MAHI



WHITE MICRO DUSK



WHITE MICRO AQUABLUE  
GLASS



BROWN MICRO BEIGE



GREY MICRO CAMEL



GREY MICRO SCARLET



# MARBEL CRETE FLOORS & WALLS SHADES AMITEK OFFERS



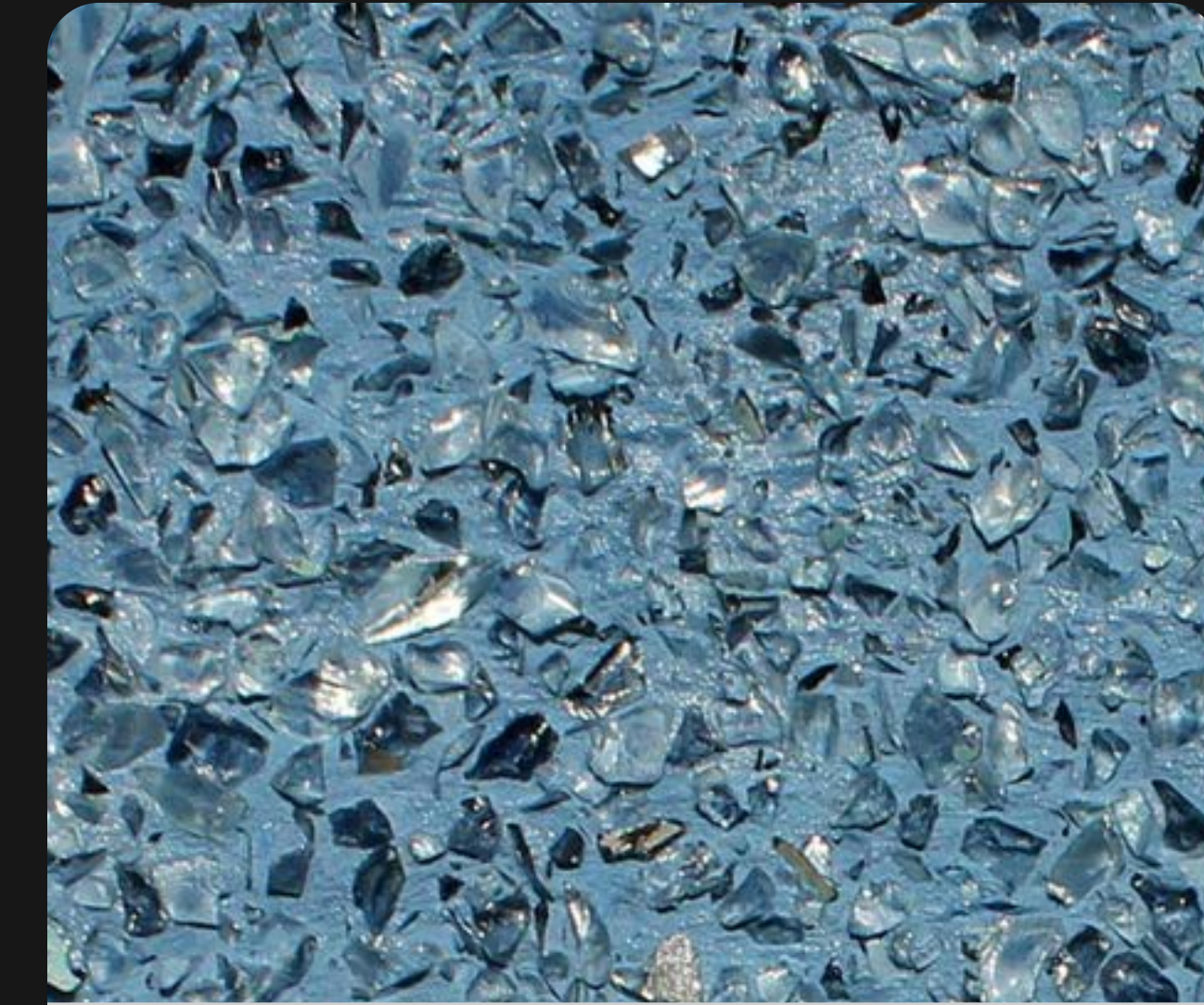
JETBLACK MICRO MARBLE



WHITE MICRO MIRROR



JAISALMER MICRO MIRROR



ROYAL BLUE MICRO MIRROR



BROWN MICRO COPPER GLASS



ROYAL BLUE MICRO AQUA BLUE GLASS



JETBLACK MICRO AQUA BLUE GLASS



# GRANUAL PASTELLONE SHADES AMITEK OFFERS



GREY



SEAWEED



BROWN



MAHI



YELLOW



CAMEL



NERO



SCARLET



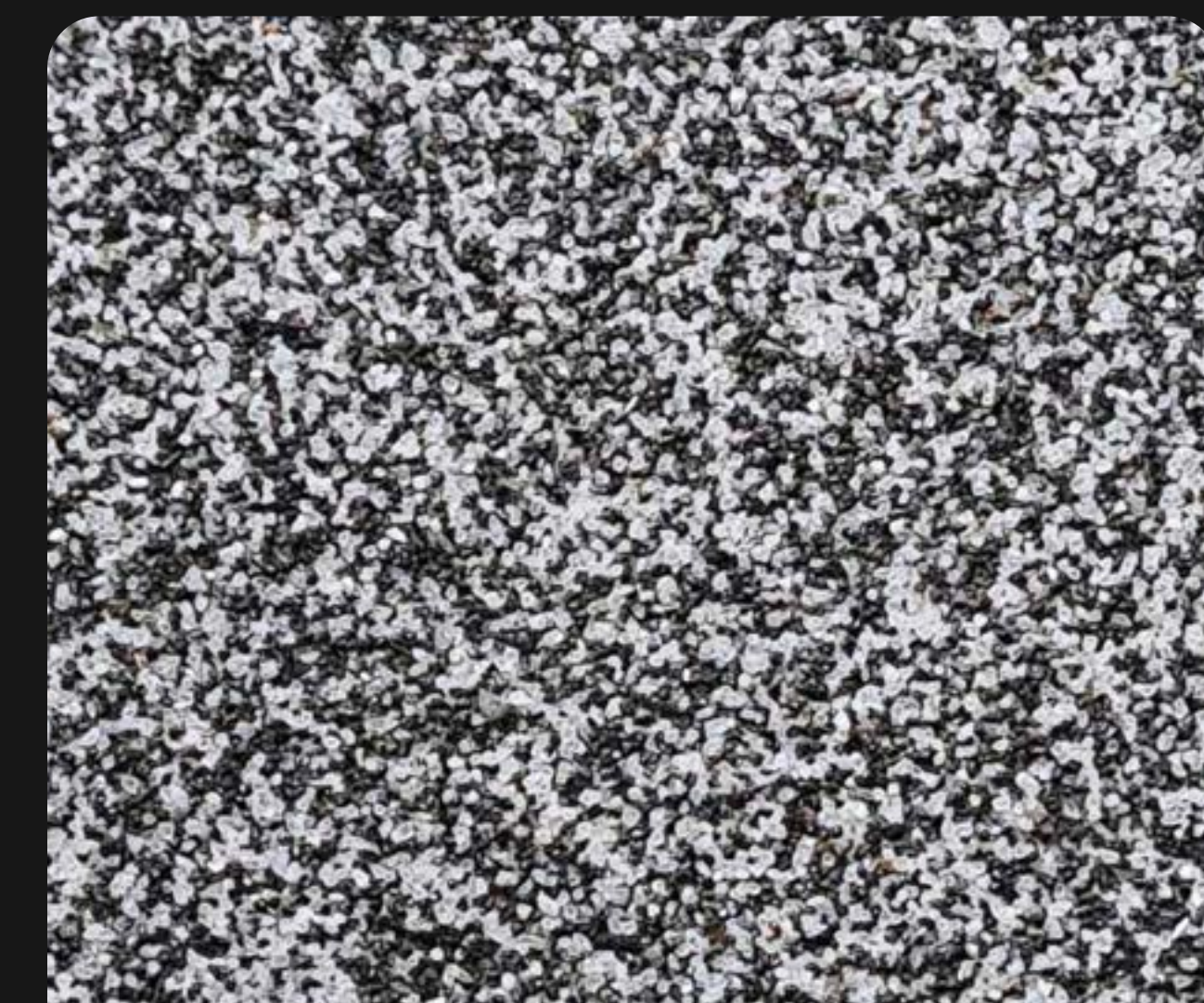
SPOTTY



DALMATION



DALMATION 20



DALMATION 50



# GRANUAL PASTELLONE SHADES AMITEK OFFERS



CARBON FINT



WHITE EARTH



LATTE



DESERT STORM



CHOCOFUDGE



DECCAN



BLACK OCHRE



PIGEON EGG



DARK THUNDER



RED SAND



RED FLAME



IVORY MATT



# GRANUAL PASTELLONE SHADES AMITEK OFFERS



MARBLE WHITE



BEIGE



BUFF



# AMITEK

A GOVT RECOGNIZED MANUFACTURER & EXPORTER OF SPECIALTY COATINGS

---



[www.amitekinfra.com](http://www.amitekinfra.com)



[www.appaintchemicals.com](http://www.appaintchemicals.com)



[shriya@appaintchemicals.com](mailto:shriya@appaintchemicals.com)



+91-9352850707, +91-7877599998

MANUFACTURED BY APP PAINT CHEMICALS PVT. LTD